

PLAY

Adam Alessi
John Baldessari
Claire Chambliss
Elizabeth Jaeger
Nevine Mahmoud
Robert Mapplethorpe
Nihura Montiel
Raúl de Nieves
Lauren Quin
William Schaeuble
Alake Shilling

April 26
– July 5, 2025

Morán Morán is pleased to present *PLAY*, a group show that features new and historical works by Adam Alessi, John Baldessari, Claire Chambliss, Elizabeth Jaeger, Nevine Mahmoud, Robert Mapplethorpe, Nihura Montiel, Raúl de Nieves, Lauren Quin, William Schaeuble, and Alake Shilling.

Play is a paradox. It is at once a frivolous activity and a profound psychological tool, a space of both unrestrained possibility and structured engagement. This exhibition explores the multifaceted nature of play: as a coping mechanism, as a framework for contemporary hyperreality, and as an essential element of human resilience. Indeed, the artworks in this exhibition highlight play's therapeutic dimension, demonstrating how creative acts, performative gestures, and interactive experiences allow for a processing of inner and outer unrest. Here, play is positioned as an active process, one that enables artists and viewers alike to explore the complexities of contemporary life without the paralyzing weight of reality's demands.

Yet, within this fluidity, there remains the potential for subversion. Play, after all, is also a site of rebellion, a way to resist imposed structures and reclaim autonomy. Artists have long used play as a means of disruption—whether through humor, absurdity, or the deliberate dismantling of established norms. The artworks here invite us to reconsider the power of play, not as a passive retreat but as an active force.

“Creative impulses are the stuff of playing. And on the basis of playing is built the whole of human's experiential existence. No longer are we either introvert or extrovert. We experience life in the area of transitional phenomena, in the exciting interweave of subjectivity and objective observation, and in an area that is intermediate between the inner reality of the individual and the shared reality of the world that is external to individuals.”

– D.W. Winnicott, *Playing & Reality*, 1971

Verso:
Exhibition checklist

This exhibition, then, is not simply an exploration of play as a concept, but an invitation to experience it as a methodology that encourages a dynamic form of engagement—one that mirrors the essence of play itself. In doing so, it reaffirms Winnicott's insight: play is not a luxury but a necessity, a means through which we navigate the chaos of our world and, perhaps, begin to imagine new ways forward.



Lauren Quin
Cub Cross, 2024
Oil on canvas
78 x 156 inches
(198.1 x 396.2 cm)



Nevine Mahmoud
Head, 2024
Portuguese marble, bronze,
and plastic
16 ½ x 76 x 11 ¾ inches
(41.9 x 193 x 29.9 cm)



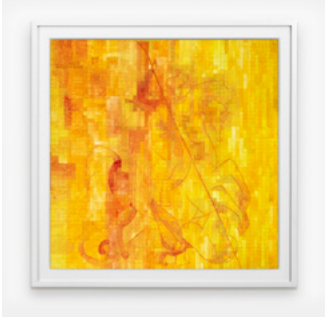
William Schaeuble
*Brothers Wrestling With
Dogs*, 2025
Oil on canvas
60 x 72 inches
(152.4 x 182.9 cm)



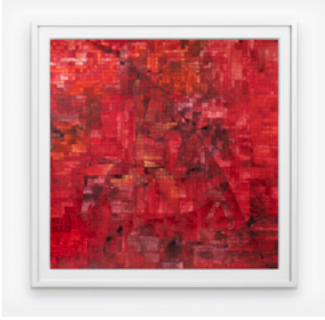
Raúl de Nieves
Illumination/Water, 2025
Watercolor on paper
13 ½ x 13 ½ inches, framed
(34.3 x 34.3 cm, framed)



Raúl de Nieves
Illumination/Earth, 2025
Watercolor on paper
13 ½ x 13 ½ inches, framed
(34.3 x 34.3 cm, framed)



Raúl de Nieves
Illumination/Wind, 2025
Watercolor on paper
13 ½ x 13 ½ inches, framed
(34.3 x 34.3 cm, framed)



Raúl de Nieves
Illumination/Fire, 2025
Watercolor on paper
13 ½ x 13 ½ inches, framed
(34.3 x 34.3 cm, framed)



Robert Mapplethorpe
White Gauze, 1984
Silver gelatin
20 x 16 inches
(50.8 x 40.6 cm)



Raúl de Nieves
Illumination/Earth, 2025
Watercolor on paper
13 ½ x 13 ½ inches, framed
(34.3 x 34.3 cm, framed)



Raúl de Nieves
Illumination/Wind, 2025
Watercolor on paper
13 ½ x 13 ½ inches, framed
(34.3 x 34.3 cm, framed)



Elizabeth Jaeger
Screaming in blue jeans, 2025
Ceramic
8 x 8 x 4 inches
(20.3 x 20.3 x 10.2 cm)



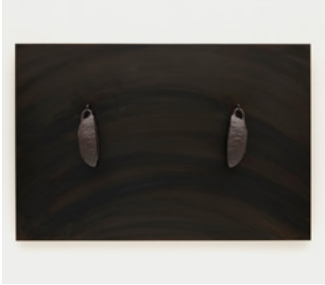
Elizabeth Jaeger
Screaming in a cardigan, 2025
Ceramic
4 ¼ x 1 ¾ x 2 inches
(10.8 x 4.4 x 5.1 cm)



John Baldessari
Quack, 2018
Composite, UV-resistant resin,
paint, UV Coating
48 x 30 x 21 inches
(121.9 x 76.2 x 53.4 cm)



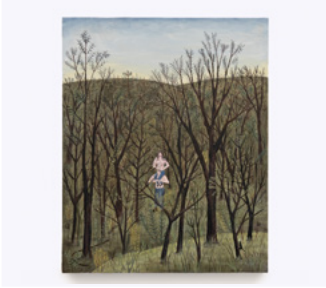
Alake Shilling
Good Old Fashioned Fun, 2025
Oil on canvas
40 x 30 inches
(101.6 x 76.2 cm)



Elizabeth Jaeger
*familial vibrato (having birthed
the seeds of mistrust)*, 2022
Ceramic and blackened steel
24 x 36 x 5 inches
(61 x 91.4 x 12.7 cm)



William Schaeuble
*Brothers Entertaining
Their Family*, 2025
Oil on canvas
60 x 72 inches
(152.4 x 182.9 cm)



William Schaeuble
*Rendezvous In
The Woods*, 2025
Oil on canvas
24 x 20 inches
(61 x 50.8 cm)



Nihura Montiel
*Your envy is starting
to show*, 2025
Charcoal and pastel
a l'ecu on canvas
34 x 34 inches
(86.4 x 86.4 cm)



Adam Alessi
Pig and Points, 2023
Oil on linen
48 x 72 inches
(121.9 x 182.9 cm)



Claire Chambless
Ghost Complex No.5, 2025
Synthetic "mars",
hydroxyapatite, wood, plastic,
film, latex
50 x 48 x 28 inches
(127 x 121.9 x 71.1 cm)