

# PLAY

Adam Alessi  
John Baldessari  
Claire Chambliss  
Elizabeth Jaeger  
Nevine Mahmoud  
Robert Mapplethorpe  
Nihura Montiel  
Raúl de Nieves  
Lauren Quin  
William Schaeuble  
Alake Shilling

April 26  
– July 5, 2025

Morán Morán is pleased to present *PLAY*, a group show that features new and historical works by Adam Alessi, John Baldessari, Claire Chambliss, Elizabeth Jaeger, Nevine Mahmoud, Robert Mapplethorpe, Nihura Montiel, Raúl de Nieves, Lauren Quin, William Schaeuble, and Alake Shilling.

Play is a paradox. It is at once a frivolous activity and a profound psychological tool, a space of both unrestrained possibility and structured engagement. This exhibition explores the multifaceted nature of play: as a coping mechanism, as a framework for contemporary hyperreality, and as an essential element of human resilience. Indeed, the artworks in this exhibition highlight play's therapeutic dimension, demonstrating how creative acts, performative gestures, and interactive experiences allow for a processing of inner and outer unrest. Here, play is positioned as an active process, one that enables artists and viewers alike to explore the complexities of contemporary life without the paralyzing weight of reality's demands.

Yet, within this fluidity, there remains the potential for subversion. Play, after all, is also a site of rebellion, a way to resist imposed structures and reclaim autonomy. Artists have long used play as a means of disruption—whether through humor, absurdity, or the deliberate dismantling of established norms. The artworks here invite us to reconsider the power of play, not as a passive retreat but as an active force.

“Creative impulses are the stuff of playing. And on the basis of playing is built the whole of human's experiential existence. No longer are we either introvert or extrovert. We experience life in the area of transitional phenomena, in the exciting interweave of subjectivity and objective observation, and in an area that is intermediate between the inner reality of the individual and the shared reality of the world that is external to individuals.”

– D.W. Winnicott, *Playing & Reality*, 1971

Verso:  
Exhibition checklist

This exhibition, then, is not simply an exploration of play as a concept, but an invitation to experience it as a methodology that encourages a dynamic form of engagement—one that mirrors the essence of play itself. In doing so, it reaffirms Winnicott's insight: play is not a luxury but a necessity, a means through which we navigate the chaos of our world and, perhaps, begin to imagine new ways forward.



Lauren Quin  
*Cub Cross*, 2024  
Oil on canvas  
78 x 156 inches  
(198.1 x 396.2 cm)



Nevine Mahmoud  
*Head*, 2024  
Portuguese marble, bronze,  
and plastic  
16 ½ x 76 x 11 ¾ inches  
(41.9 x 193 x 29.9 cm)



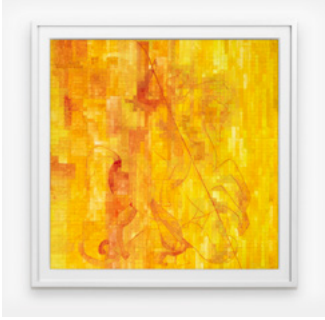
William Schaeuble  
*Brothers Wrestling With  
Dogs*, 2025  
Oil on canvas  
60 x 72 inches  
(152.4 x 182.9 cm)



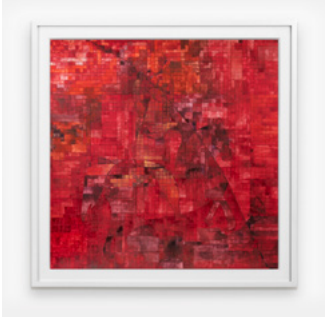
Raúl de Nieves  
*Illumination/Water*, 2025  
Watercolor on paper  
13 ½ x 13 ½ inches, framed  
(34.3 x 34.3 cm, framed)



Raúl de Nieves  
*Illumination/Earth*, 2025  
Watercolor on paper  
13 ½ x 13 ½ inches, framed  
(34.3 x 34.3 cm, framed)



Raúl de Nieves  
*Illumination/Wind*, 2025  
Watercolor on paper  
13 ½ x 13 ½ inches, framed  
(34.3 x 34.3 cm, framed)



Raúl de Nieves  
*Illumination/Fire*, 2025  
Watercolor on paper  
13 ½ x 13 ½ inches, framed  
(34.3 x 34.3 cm, framed)



Robert Mapplethorpe  
*White Gauze*, 1984  
Silver gelatin  
20 x 16 inches  
(50.8 x 40.6 cm)



Nevine Mahmoud  
*Hot air (deflating)*, 2024  
Bronze  
13 x 13 x 13 inches  
(33 x 33 x 33 cm)



Claire Chambliss  
*Ghost Complex No. 6  
aerial view*, 2025  
Found dollhouse, synthetic “mars”  
hydroxyapatite, epoxy resin, latex,  
water-based polyurethane  
48 ¼ x 34 ¾ x 13 inches  
(122.6 x 88.3 x 33 cm)



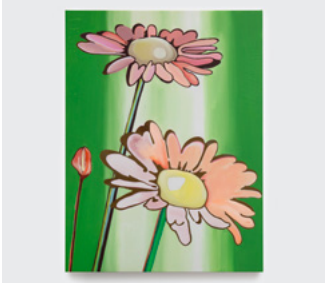
Elizabeth Jaeger  
*Screaming in blue jeans*, 2025  
Ceramic  
8 x 8 x 4 inches  
(20.3 x 20.3 x 10.2 cm)



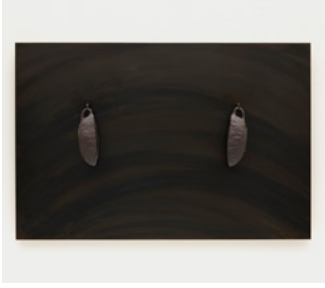
Elizabeth Jaeger  
*Screaming in a cardigan*, 2025  
Ceramic  
4 ¼ x 1 ¾ x 2 inches  
(10.8 x 4.4 x 5.1 cm)



John Baldessari  
*Quack*, 2018  
Composite, UV-resistant resin,  
paint, UV Coating  
48 x 30 x 21 inches  
(121.9 x 76.2 x 53.4 cm)



Alake Shilling  
*Good Old Fashioned Fun*, 2025  
Oil on canvas  
40 x 30 inches  
(101.6 x 76.2 cm)



Elizabeth Jaeger  
*familial vibrato (having birthed  
the seeds of mistrust)*, 2022  
Ceramic and blackened steel  
24 x 36 x 5 inches  
(61 x 91.4 x 12.7 cm)



William Schaeuble  
*Brothers Entertaining  
Their Family*, 2025  
Oil on canvas  
60 x 72 inches  
(152.4 x 182.9 cm)



William Schaeuble  
*Rendezvous In  
The Woods*, 2025  
Oil on canvas  
24 x 20 inches  
(61 x 50.8 cm)



Nihura Montiel  
*Your envy is starting  
to show*, 2025  
Charcoal and pastel  
a l'ecu on canvas  
34 x 34 inches  
(86.4 x 86.4 cm)



Adam Alessi  
*Pigs and Points*, 2023  
Oil on linen  
48 x 72 inches  
(121.9 x 182.9 cm)



Claire Chambliss  
*Ghost Complex No.5*, 2025  
Synthetic “mars”,  
hydroxyapatite, wood, plastic,  
film, latex  
50 x 48 x 28 inches  
(127 x 121.9 x 71.1 cm)